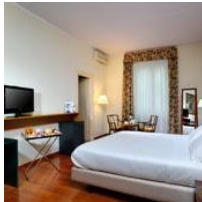
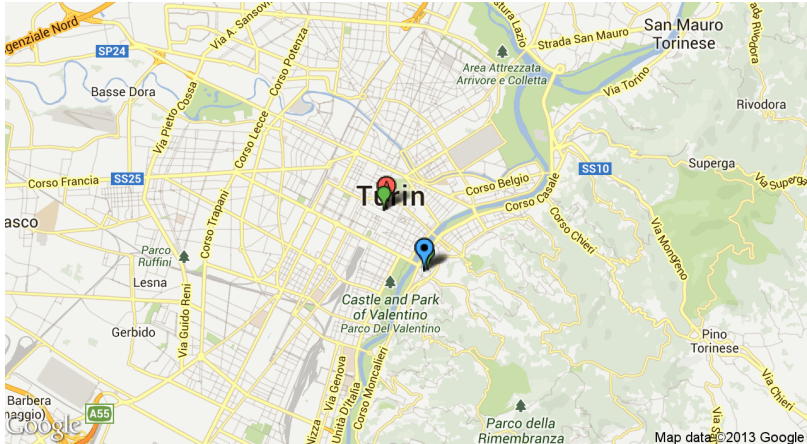


DAY 1

# MUSEO EGIZIO DI TORINO



### Best Western Hotel Crimea

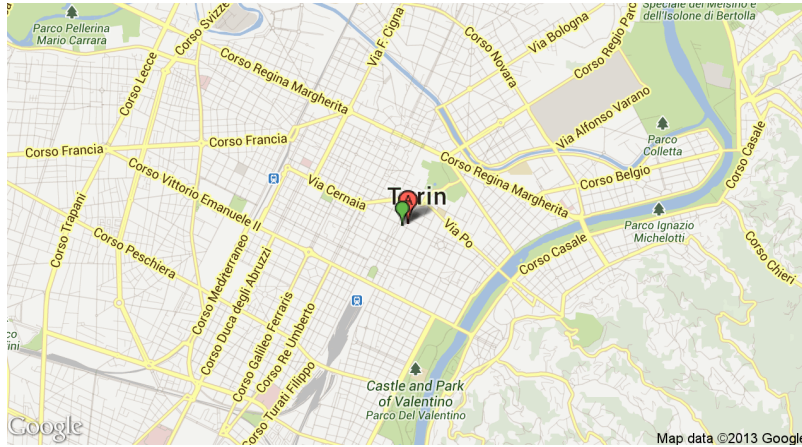


Via Mentana 3, 10133 Turin

GPS: N45.05645, E7.69474

on foot: 2.1 km (26 mins) [Get directions](#)





**Egyptian Museum, Turin** / Museo Egizio

One of the best of its kind in the world, this museum and its rich collection is definitely not to be missed.

V. Accademia delle Scienze 6, 10123 Torino, Italy

GPS: N45.06833, E7.68444

**Phone:**

+39 11 561 77 76

on foot: 2.1 km (27 mins) [Get directions](#)



**Fermata 1952 - CRIMEA**

Italy

GPS: N45.05665, E7.69557



**Fermata 4058 - ROMA**

Italy

GPS: N45.06811, E7.68366



BUS

air: 1.6 km [Get directions](#)

**Get Free Tripomatic App!**

Have the world at your feet, and your trip at your fingers.



[www.tripomatic.com/iphone](http://www.tripomatic.com/iphone)  
[www.tripomatic.com/android](http://www.tripomatic.com/android)

- ▶ Discover more with on-the-go visual trip guide.
- ▶ Find nearby sights and attractions, wherever you are.
- ▶ Sync your trip plans to your device.